



### September Meeting

The September meeting of the Heart of the Heartlands was held on September 10, 2022 in the Webb Center at Carona, KS. There were 10 members present. Minutes of the meeting can be found at the end of this newsletter. Members in attendance were: John Chambers, Jack Evans, Ivan & Denzil Voorhees, Kathy & Larry Spahn, Brian Carlson, W.D. Carter, Paul Morgan and Ed Brinkmeyer.

### Next Meeting

The next meeting will be October 8, 2022 at 1:00 pm at the Webb Center in Carona.

### Heartlands - YouTube

Check out our YouTube channel:

[https://www.youtube.com/channel/UCMIkqWyCxftDif\\_ezgw3UyQ](https://www.youtube.com/channel/UCMIkqWyCxftDif_ezgw3UyQ)

## Little Balkans Days Train Rides

As part of the annual Little Balkans Days in Pittsburg, KS, there were two train rides on Saturday, September 3. The rides left at 9:00 am and again at 11:00 am from the intersection of Monroe and Elm Streets. The weather was wonderful with temperatures in the 70's instead of the 90's we have been



experiencing in the area for the last few weeks. Both of the rides were sold out with a total of 516 persons enjoying the one hour rides. The Heartlands received a \$1,000.00 donation from the Little Balkans

Committee which is greatly appreciated. Those members working the train were Denzel and Ivan Voorhees, Dave Parker, Jack Evans, Paul Morgan, John Chambers, and Bryson, Kathy and Larry Spahn. Dave Wallace assisted the crew as well. We wish to thank our SKOL crew for the day of engineer Mike Yoger and conductor Joe Reeves.



- Larry Spahn photos

## Model T's - Visit Carona

Over one hundred members of the Heart of the Ozarks Chapter of the Model T Ford Club of America paid a visit to our museum on September 8th.



There were at least forty-three Model T's on display. Many of those that were in the group gave us compliments about the quality of the

## From our Past

We will be featuring photos from our past for awhile.



This photo was taken in 2011 getting ready for the Saturday Little Balkans Day rides. From left to right on the ground is Kathy Spahn, Ron Morgan and Larry Spahn. John Spahn is on the back of the locomotive.

## Announcements

- The KCS Holiday Express Train is returning! It will be in Pittsburg on December 10th and on display starting at 4:00 pm. Anyone wishing to volunteer need to be at the train's location, Monroe and Elm Streets by 3:30 pm.
- The 2022 annual meeting will be held on Saturday, November 12th at 1:00 pm. It will be held at the Webb Center; more details to follow.

### Heart of the Heartlands

Any questions, comments or suggestions, contact:

Brian Carlson

[bcarlson@ckt.net](mailto:bcarlson@ckt.net)

620-820-9665 (leave message)

exhibits and displays at our museum. Many photos were taken with the old cars and the KCS #1023, along with the Carona and Boston depots. The club made a \$250.00 donation to the Heartlands which is greatly appreciated. The group then went to Big Brutus for a visit and lunch before

heading to Baxter Springs and to travel route 66 to Galena before heading back to Pittsburg.

- John Chambers photos

## Chanute Artist Alley Train Rides

There will be three train rides in Chanute on Saturday, September 24th. Each ride will be one hour long and will all depart from the old Santa Fe Station in Chanute which is now the Chanute Public Library and the Osa & Martin Safari Museum. The first ride will depart at 9:00 am, the second ride will depart at 1:00 pm and the last ride will depart at 3:00 pm. Members working on these trains should be at the departure area at least one hour prior to boarding.

Those members planning on attending to help, the address of the former Santa Fe Depot in Chanute is: 111 N. Lincoln, Chanute, KS

## Nick Muff Collection

Dr. Nick Muff has started sending us (Heart of the Heartlands) his vast collection of KCS information which includes many hundreds of drawings and photographs that he has put together over the years. These include many rarely seen example's of the KCS in its glory years with a



Joplin Union Depot -circa 1915



Joplin Union Depot

mixture of a few associated railroads. There are three large photo albums that cover the construction of the Kansas City Union Station alone. Nick is also sending us a complete set of Pullman Red Books which deal with the construction of Pullman passenger cars.

The photos here are a small (very small) sampling of pictures and other information that has been sent to the Heartlands from Dr. Nick Muff. The contents of what we are receiving

may very well be the largest collection of Kansas City Southern in our southeast Kansas. There will be more to follow as the weeks and months progress. We will do our best to keep you updated.



Joplin Union Depot



Joplin Union Depot

Joplin Union Depot Round house



Joplin Union Depot is in the background on the right.

*-All photos from Nick Muff Collection*

## Internet Service Comes to the Webb Center

At the July meeting of the Heartlands, it was approved to install equipment in the Webb Center that would allow internet access to come to the museum. Heartland member, Brian Carlson, has been installing equipment over the past couple of months. With the availability of some of the equipment being in question from time to time, it has taken a little bit of time to get everything in. Currently, CenturyLink is providing the internet service to the building. They have not been the easiest to deal with especially since there was no existing phone service of any kind to the complex. On September 20, John Chambers and Larry Spahn happened to be on site when the company arrived to bury the new service line to the building. Burying the line took over a month to complete, with us anxiously awaiting their arrival to make sure they knew of existing lines and potential problems around the building.

Inside, equipment is in place that provides wireless internet service in two-thirds of the complex. The original section does not have wireless service yet but the meeting and library area as well as the Morgan addition do have service. When everything is completed and installed, there will be two networks, one for our use and the other, a “guest” network for visiting individuals to use.

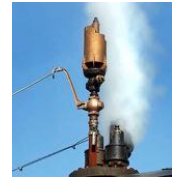
## Additional Items to Note

- John Chambers is working on a slide show. Tentative plans are to have one on November 19, 2022. More details to follow.
- It was voted on and passed at the September meeting to cancel the December meeting of the Heartlands due to conflicts with schedules during the holiday season.
- There will be about twenty vintage cars coming from Kansas City to visit the Carona museum on Saturday, October 15th. Plans for the visit are from 1:00 pm to 3:00 pm, times are approximate. Heartland members wanting to help out should be at the museum around 12:30 pm.

### Got a spot?

Don't hesitate to send something in if you have a place you have been or would like to go to. Our members would love to hear about it!

# Whistle Stop!



## The East Troy Railroad Museum

*- Article and photos, Brian Carlson*



The #4420, built in 1924. The #4453 is behind it. This was our ride for the day.

Recently, my wife Dawn and I took a quick little trip to Wisconsin to get away and visit places along the way. One of the stops we came across was a little museum in East Troy, Wisconsin. It was here we found the East Troy Railroad Museum. When we called prior to our arrival, we asked if their cars were trolley cars. We were quickly informed that they ran electric trains. It turned out, they run vintage interurban cars on almost 7 miles of track that began in 1907, when the Milwaukee Electric Railway and Light Company (TMER&L) completed the interurban from Milwaukee to East Troy. At the time there was over 200 miles of track in southeast Wisconsin and this section is the only part that remains.



Looking down the track at the Elegant Farmer stop

With 27 cars on their roster there is a full schedule of train rides available. This year, starting on the weekend of April 23-24, there were 3 trains daily every Saturday and Sunday through Labor Day Weekend. Starting the first Friday in June through the Friday of Labor Day weekend, there were 6 trips each Friday. After the conclusion of their regular season rides on Labor Day weekend, they have Harvest Fest Trains that run on a special schedule from the second weekend of September through the end of October. Special events throughout the year including Railfan Day, Milwaukee Day, Chicago Day, Beer Tasting Train, Halloween Trains and Christmas Trains fill out the year. Also, they offer dinner rides, 17 of them this year, on their dinner coaches on various dates. The coaches can even be reserved for

private parties, gatherings, etc.

For me, the experience was one of nostalgia. My grandfather rode the Joplin & Pittsburg Railway in the Weir-Pittsburg area 100 years ago. Riding the East Troy was the closest experience I believe I could have had in replicating what my grandfather experienced all those years ago on the J&P. The J&P had over 110 miles of track at that time with one section of track running to West Mineral, Kansas, going just north of our current Museum Complex in Carona. If you are in the area of southeast Wisconsin, a trip on the East Troy Railroad Museum is well worth the stop. For more information on the East Troy, check out their website at [www.easttroyrr.org](http://www.easttroyrr.org).



The Museum is housed in the former TMER&L substation in East Troy.



Inside #4453 - Chicago Elevated built in 1924

## September 10, 2022 - Heart of the Heartlands - Minutes

The September 10, 2022 meeting of the Heart of the Heartlands was brought to order by President Larry Spahn at 1:00 p.m.

**Minutes of previous meeting:** Jack Evans moved to accept the minutes as mailed. W.D. Cater seconded the motion, the motion passed.

**Treasurer's Report:** After the presentation of the treasurer's report created by treasurer Brian Carlson, John Chambers moved, W.D. Carter seconded the motion to accept the treasurer's report. The motion was passed by the membership in attendance.

### **Old Business:**

#### **Little Balkans Train Rides:**

Both of the rides were sold out with a total of 516 persons enjoying the one hour rides. The weather cooperated with temperatures in the 70s. The Heartlands received a \$1,000.00 donation from the Little Balkans Committee. This donation is much appreciated. Those members working the train were Denzel and Ivan Voorhees, Dave Parker, Jack Evans, Paul Morgan, John Chambers, and Bryson, Kathy and Larry Spahn. Dave Wallace assisted the crew as well.

#### **Dr. Muff Donation:**

Nick Muff has started sending us (Heart of the Heartlands) his vast collection of KCS information which includes many hundreds of drawings and photographs that he has put together over the years. These include many rarely seen example's of the KCS in its glory years with a mixture of a few associated railroads. There are three large photo albums that cover the construction of the Kansas City Union Station alone. Nick is also sending us a complete set of Pullman Red Books which deal with the construction of Pullman passenger cars.

#### **Model T Club Visit:**

Over one hundred members of the Heart of the Ozarks Chapter of the Model T Ford Club of America paid a visit to our museum on September 8th. There were at least forty-three Model T's on display. Many compliments were received about the quality of the exhibits and displays at our museum. Many photos were taken with the old cars and the KCS #1023 and the Carona and Boston depots. The club made a \$250.00 donation to the Heartlands which is greatly appreciated. The group then went to Big Brutus for a visit and lunch before heading to Baxter Springs and to travel route 66 to Galena before heading back to Pittsburg.

### **New Business:**

#### **Artist Alley Train Ride:**

There will be three train rides out of Chanute on Saturday, September 24<sup>th</sup>. Each ride will be one hour long. The rides will all depart from the old Santa Fe Station in Chanute. The station is now being used as

the City Library and the Martin and Ossa Johnson Safari Museum and will travel north out of Chanute. The first ride will depart at 9:00 am, the second ride will depart at 1:00 pm and the last ride will depart at 3:00 pm. Members working on these trains should be at the departure area at least one hour prior to boarding. Hopefully we will have enough members to properly staff the rides.

**Kansas City Southern Holiday Express:**

The KCS Holiday Express Christmas train will be on display in Pittsburg, Kansas on Saturday, December 10<sup>th</sup>. The train will be located at the intersection of Monroe and Elm Streets and will be open to the public at 4:00 pm. Heartland members that want to volunteer to be elves should be at the train around 3:30 pm to sign releases and get their elf costumes. Hopefully it won't be too cold or snowing as it has been in the past.

**Kansas City Vintage Car Club Visit:**

There will be about twenty vintage cars coming from Kansas City to visit the Carona museum on Saturday, October 15<sup>th</sup>. Plans for the visit are from 1:00 pm to 3:00 pm, times are approximate. Heartland members wanting to help out should be at the museum around 12:30 pm.

**Internet connection:**

Brian Carlson has been working on the installation of our new internet equipment.

**Annual Meeting:**

The 2022 Annual Meeting of the Heart of the Heartlands Corporation will be held at 1:00pm on November 12<sup>th</sup>.

**Cancellation of December meeting:**

After a brief discussion, John Chambers moved to cancel the December meeting. Kathy Spahn seconded the motion and the motion passed by those present.

**Morgan Addition Dedication:**

After a brief discussion it was agreed to bring the topic of dedicating the Morgan Addition to the club at a later meeting.

**Slide and Media Show:**

John Chambers mentioned that he has a tentative date for a slide show. The date he is looking at is Saturday, November 19, 2022. More details and confirmation of the date and time will come at a later time.

Jack Evans moved to adjourn the meeting. W.D. Carter seconded the motion and it passed by the membership present.

- Life Time Membership

Discussion was held in regards to making John Parsons a life time member on account of his support and contributions to the Heartlands over the years. Jim McKeel moved and Jack Evans seconded a motion to make John Parsons a lifetime member of the Heart of the Heartlands. The motion passed by all those present. A certificate will be created to give to John to recognize this membership

- Gasoline Reimbursement

Discussion was held about a monetary reimbursement for members to drive to Heartlands events. Tom Johnston moved to have a mileage reimbursement for volunteers to Heartland Sanctioned Events at the current IRS volunteer mileage reimbursement rate. Jim McKeel seconded the motion and the motion passed by all those present.

- Internet at the Corona complex

Discussion was held about setting up internet capabilities to the Webb Center. In addition to internet in the main building, discussion was also held in regards to beginning to adding additional networking items to the museum building. After a lengthy discussion, Jim McKeel moved to approve up to \$3,000 to purchase the necessary equipment to bring internet to the building as well as purchasing additional equipment as needed. John Chambers seconded the motion. The motion passed unanimously by those present.

- Certificate of Appreciation

It was suggested that a certificate of appreciation be created and sent to Quality Pest Control thanking them for their donation in regards to removing the ant infestation at the Webb Center and spraying the main buildings and both depots.

## Announcements

- The KCS Holiday Express will not be taking place this year. It was cancelled in 2020 due to the pandemic and it was recently announced that it would not be running in 2021.
- MEMBERSHIP DUES - It is time to renew your membership with the Heartlands. At the right is the new pricing for the 2022 year. You can renew your membership three ways:
- Filling out the form at the end of this newsletter and sending it and payment to either address below.
- Go to our website, <http://www.heartlandstrainclub.org> and then selecting the "Click Here" link on the right hand side of the page.

Send Payment to:

Brian Carlson  
2209 S. Taylor St.  
Pittsburg, KS 66762

OR

Heart of the Heartlands  
% Brian Carlson  
PO Box 211  
Scammon, KS 66773

## 2022 Membership Dues

It is that time of year for membership dues to be renewed. At the September meeting, it was passed to adopt a new membership pricing plan beginning with memberships for 2022 and beyond. If you already purchased multiple years, you do not need to pay anything until your current membership expires. All members will receive a statement, either by email or mail, informing you of when your membership expires. Any questions, please, please contact Brian Carlson.

Previously, a single membership was \$25 and a family membership was \$35 for one year. With the new proposal, a single adult membership will be \$35 for a year. Single adult memberships for senior adults (60+) will be \$25 for the year. Family memberships will be \$50 each year. There is a 10% discount for memberships that are purchased for a three year period.

### Heart of the Heartlands Membership Plans

	1 Year Membership	2 Year Membership	3 Years (10% discount)
Adult	\$30	\$60	\$81
Senior (60+)	\$25	\$50	\$67.50
Family	\$50	\$100	\$135
Student (High School, College, Trade School - age 22 or less)	\$20	\$40	\$54
Contributing	\$100	\$200	\$270
Sustaining*	\$250	\$500	\$675
Life Membership	\$1,000		

Membership is for calendar year - no discount for joining later in the year.

Memberships include:

Monthly Newsletter  
10% discount in the gift shop  
Free train rides IF SPACE AVAILABLE

\*Sustaining Membership- for two or three years includes the use of the Good Times Caboose on one regular excursion train for family or group

\*Life Membership - includes the use of the Good Times Caboose on two regular excursion trains for family or group



### Museum Items

- We are still short on members who can help with the grass mowing. With all the rain the grass has really been growing. The members that have been mowing regularly are Jim and John Lovell, Dawn and Brian Carlson and Larry Spahn.

## Membership Proposal

Earlier in the year, the club discussed changes for membership for the club. A membership committee of Jim McKeel, John Chambers and Brian Carlson was formed to look into some plans and draw up a proposal for the club. Below are two options that the club will decide on during the August meeting. The proposals would be in effect for memberships starting on or renewing on January 1, 2022. If you have any questions, comments, or suggestions, please contact a board member or contact Secretary-Treasurer, Brian Carlson. Brian’s contact information is on the first page of the newsletter.

Proposal 1

	1 Year Membership	2 Year Membership	3 Years (10% discount)
Adult	\$35	\$70	\$94.50
Senior (60+)	\$30	\$60	\$81
Family	\$50	\$100	\$135
Student (High School, College, Trade School - age 22 or less)	\$20	\$40	\$54
Contributing	\$100	\$200	\$270
Sustaining*	\$250	\$500	\$675
Life Membership	\$1,000		
Membership is for calendar year - no discount for joining later in the year.			
Memberships include:			
Monthly Newsletter 10% discount in the gift shop Free train rides IF SPACE AVAILABLE			
*Sustaining Membership- for two or three years includes the use of the Good Times Caboose on one regular excursion train for family or group			
*Life Membership - includes the use of the Good Times Caboose on two regular excursion trains for family or group			

Proposal 2

	1 Year Membership	2 Year Membership	3 Years (10% discount)
Adult	\$30	\$60	\$81
Senior (60+)	\$25	\$50	\$67.50
Family	\$50	\$100	\$135
Student (High School, College, Trade School - age 22 or less)	\$20	\$40	\$54
Contributing	\$100	\$200	\$270
Sustaining*	\$250	\$500	\$675
Life Membership	\$1,000		
Membership is for calendar year - no discount for joining later in the year.			
Memberships include:			
Monthly Newsletter 10% discount in the gift shop Free train rides IF SPACE AVAILABLE			
*Sustaining Membership- for two or three years includes the use of the Good Times Caboose on one regular excursion train for family or group			
*Life Membership - includes the use of the Good Times Caboose on two regular excursion trains for family or group			

## Back in Time?

This section is about railroad lines that may have since been abandoned. Where did they go? A brief history of some forgotten places.

# Where Did They Go?

## Atchison, Topeka & Santa Fe Chanute, KS to Pittsburg, KS

*This article originally appeared in the Heartland's May 2019 Newsletter.*

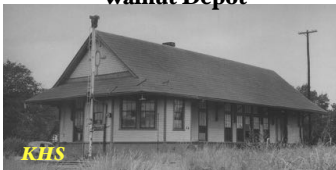
**Chanute Depot**



**Erie Depot**



**Walnut Depot**



**Girard Depot**



**Frontenac Depot**



**Pittsburg Depot**



*KHS Photos - Kansas State Historical Society*

The Girard branch of the Santa Fe served the communities of Chanute, Erie, Walnut, Girard, Frontenac and Pittsburg. It's terminus was in Chicopee, KS but the Santa Fe also had track rights on the Kansas City Southern railroad to Joplin, MO. The Santa Fe was one of four railroads that contributed to the construction of the Joplin Union Depot so they had passenger and freight service to Joplin. Construction of the line began in the early 1880's from Chanute and reached Girard in January 1884. The section from Girard to Frontenac was built in 1886-7 and reached Frontenac in April of 1887. It was in 1887 that the track made its way through Pittsburg and reached Chicopee. In 1912, the Santa Fe acquired track rights to Joplin.

The Girard branch was always a branch line and thus saw freight traffic with some passenger traffic mixed in. A large amount of passenger service was handled by motor cars or Doodlebugs. According to a time table from November 4, 1896, there was a daily freight train, one each direction between Chanute and Pittsburg. Also during this time was a couple of different passenger trains. Passenger train 242 would leave Pittsburg daily at 10:40 am and reach Chanute at 12:40 pm. At 3:00 pm, passenger train 241 would depart Chanute making its way back to Pittsburg with a 5:05 pm arrival time. During the day, passenger train 245 would leave Girard heading for Pittsburg at 9:55 am. That train would arrive in Pittsburg at 10:35 am. At 5:10 pm, passenger train 246 would leave Pittsburg to arrive back in Girard at 5:50 pm.

By June of 1938, there was still a daily freight train to and from Chanute to Pittsburg. However, passenger traffic was being handled by motor cars. The Girard to Pittsburg daily passenger train was gone, but there was still daily passenger traffic from Chanute to Pittsburg. Motor car passenger service would leave Chanute at 8:24 am and arrive in Pittsburg at 10:05 am. At 10:10 am, the motor car would leave Pittsburg heading back and arriving at Chanute at 11:50 am. The Chanute to Pittsburg morning run was also part of scheduled passenger service from Emporia to Pittsburg. The motor car would leave Emporia at 5:00 am and make the trek south of Emporia through Madison, KS to Benedict, KS to Chanute arriving around 8:10 am. It would then head to Pittsburg as scheduled.

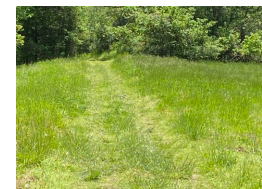
Passenger trains on the Girard branch disappeared long before all passenger service on the Santa Fe ended on April 30, 1971, but the Girard branch line still provided mixed freight service. Prior to April 30, 1971, if one knew to ask an agent, one could purchase a ticket to ride on the line with a seat in the caboose. Freight service continued on the line till the track was abandoned on April 12, 1986.



Old Santa Fe grade. Looking east from the NE corner of Erie.



Overgrown concrete culvert on Santa Fe grade between Erie and Walnut.



Heading SE through Walnut. The MKT crossed in the tree line pictured here.



Former Joplin St crossing in Pittsburg. This is looking NE. The building in the background was at the south end of the Santa Fe yard. The yard ran north & south on the east side of Joplin Street.

## Book Review Section!!!

This section is for a set of book reviews that member John Chambers has put together. We have several books in our small library at the Webb Center, but we are having more and more people ask about what books talk about the history of the railroads in the 4-state area. John has taken the time to produce these short book reviews to aid in ones' quest for that missing railroad history. Enjoy!



Cornell Junction depot. This was east of Pittsburg on the MOP between Nevada, MO and Coffeyville, KS.

## From the Past...

### *St. Louis Trolleys in Color*

Young, Andrew D. *St. Louis Trolleys in Color*. Scotch Plains, NJ: Morning Sun Books, 2011.

This is a nice color picture book of streetcars in St. Louis from 1940 to 1966. The pictures are crisp, clear and show some interesting scenes in the St. Louis area. The accompanying text is very informative and helps to explain the streetcar system of St. Louis and its demise. A nice book to have if you are interested in St. Louis. It is out of print but copies can still be found starting around \$60.00.

### *Topeka Rails*

Gibson, William O. *Topeka Rails*. David City, NE: South Platte Press, 2000.

This short book is mostly a photographic history of the railroads of Topeka based on the memories and stories of the author whose father was employed by the Santa Fe. It makes for a nice evening's read. It covers all of the railroads that served the capitol city; Santa Fe, Mo Pac, Rock Island and the city streetcar system. It is out of print but a check on the internet should bring up some used copies for sale.

### *Harvey Houses of Kansas*

Latimer, Rosa Walston. *Harvey Houses of Kansas*. Charleston, SC: The History Press, 2015.

This is a very nice book which tells the story of Fred Harvey in Kansas, how he started his famous restaurants and hotels in conjunction with the Santa Fe and his other facilities within the state. It has a section telling about the Harvey girls and their place in popular culture and what it was like working as one. In the back is a section with some recipes for Harvey house dishes that can be made at home. It tells the history of each Harvey operation within the state, when they operated and what kind of facility it was. It is a must read for anyone interested in the Santa Fe, Fred Harvey or Kansas history. It is still available from several sources and the publisher also has an e-book version.