



January Meeting

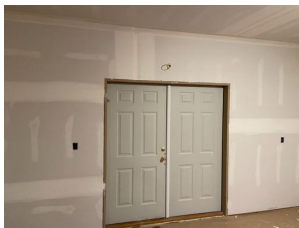
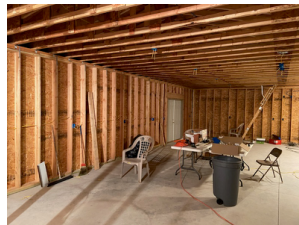
The January meeting of the Heart of the Heartlands was held on January 8, 2020 in the Webb Center at Carona, KS. There were 22 members and 1 guest present. Minutes of the meeting can be found at the end of this newsletter. Members in attendance were: Joe Murphey, Jack Evans, W.D. Carter, John Chambers, Frank H. Osborn, Ivan & Denzil Vorhees, Connie & Mike Payton, Brian Carlson, Larry & Jenice Gaither, Bob Capps and guest Maddie Capps, Dick Rauniker, Steven Gardner, Nicolas Ybarra, Guy & Brenda Ferguson, Kathy & Larry Spahn and Darrell Cave.

Heart of the Heartlands

The monthly newsletter is constructed by Secretary-Treasurer Brian Carlson. If you have any questions, comments, suggestions you may reach him at: bcarlson@ckt.net 620-820-9665

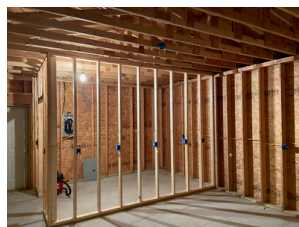
North Addition

Work on the new addition continues. Dave Parker and Larry Spahn have spent several days working on getting all of the wall boxes, light fixtures, fan support boxes and outside receptacles installed. In addition, they also pulled all of the wire and put it in the boxes. Better Built came out to install the walls for the new closets which allowed Dave

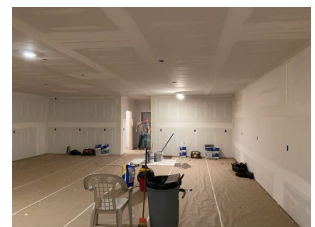
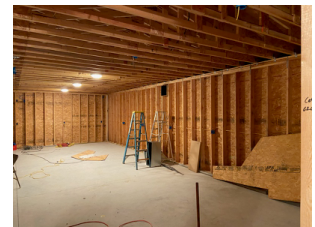


and Larry to finish up the wiring. Brian Carlson installed the wiring for the computer and video on January 4. President Larry Spahn contacted a painter and he said he will paint the walls and ceilings, primer and two coats for \$400.00. The Heartlands will supply the paint but he said that we can use his account to get his discount on the paint. The club decided to go ahead with the contacts Larry had made for the painting as well as the sheetrock work. It was decided by the

members present to name the new addition the "Ron Morgan Addition". Ron Morgan was one of the first members of the Heartlands and was a key figure on all the rides for over 25 years. Ron passed away January 2, 2020.



Photos courtesy of Brian Carlson



What is it?

This is an item that is currently located in the Carona museum. What is it?



Answer next month

Photo courtesy of Brian Carlson

Last Month's picture was a ticket cabinet from the Kansas City, Pittsburg & Gulf Railroad. From the Ed & Nancy Offenbacher collection.

Announcements

- The next meeting will be February 12, 2020 at 7:00 pm at the Webb Center.
- There will be a slide show on February 16th at the Webb Center. It will last from 11:00 am to 5:00 pm. More information will be sent out in an email blast the first week of February.
- Jim McKeel and Brian Carlson completed the PayPal setup for the club. As of now, memberships and donations can be submitted from our website.
- If you have attended a train ride safety meeting in the past, there is an online option available. Contact Brian for more info.

Engine Display

Cameron Lundy has worked with the SKOL track department to have a display track panel constructed for the seventy ton, CVR engine which is now on site at Carona. The display track is now built and is near the display pad. It is too wet to place the track on the pad but this will be done when the ground dries out. Stay tuned for more on this project as things progress.

First Graders Train Ride

There were approximately 381 first graders on the Watco Christmas Express train ride on December 9th. Large sugar cookies and



Photos courtesy of Nick Ybarra

bottles of water were distributed to the students by employees from Watco. Santa was waiting along the line and waved at the kids from a bucket truck as

the train passed by. Upon returning to Pittsburg, each student received a bell and a Christmas



Photos courtesy of Nick Ybarra

book as they got off of the train. Heartland members that assisted on the ride were Brenda and Guy Ferguson, Denzel and Ivan Voorhees, Jim McKeel, Nick Ybarra, John Chambers, Dave Parker and Kathy and Larry Spahn.



Photos courtesy of Nick Ybarra

Motor Car Ride

The first motorcar ride of 2020 was held on January 18th in Stillwater, OK on the Stillwater Central Railroad. It was a nice day for a ride, especially in January. There were 7 cars on the ride that went from Stillwater toward Pawnee, OK. Drake Rice was the coordinator for this ride. A great deal of thanks goes out to Drake for getting this ride established. Stuart Remmers and Drake are working on more rides this year for the Heartlands. We will keep you posted as those rides come available.

Train Ride Safety Meeting

The annual train ride safety meeting will be held at Carona on March 14 at 1:00 pm. If you have not attended a meeting before, you must attend this meeting in order to be able to work on the train rides. If you have previously attended this meeting, there is an online option available. Email or call Brian Carlson for more information.

Ron Morgan



Long time Heartlands member Ron Morgan passed away on January 2, 2020. Ron was an early member of the Heartlands and served as conductor on most of the train rides for over 25 years. Ron also served on the board, was a past secretary and a very active member. He will be missed greatly. Those that had the privilege of working with and knowing Ron can attest to the great person Ron was.

Donation

- Herb Shauver III donated 7-9 boxes of items to the Heartlands.
- New member Kevin Love, who is also president of the Missouri Pacific Historical Society, donated a box of MPHS past magazines for the Heartlands' library.
- Woody donated a gas can and lenses.

KCS Holiday Train

Because of snow, icy road conditions and very cold blowing winds, attendance was down a bit at Pittsburg this year. This also kept the number of elf volunteers from the Heartlands at home. Darrell Cave and Brian Carlson were the only Heartlands' members that were able to help with the train this year. Just under 900 people went through the train in Pittsburg. Nick Yberra helped out with the train in Arkansas and the Joplin visit prior to its arrival in Pittsburg.

2020 Train Rides

It is that time of year where we work on the rides for the upcoming year. We have to present a schedule to the railroad so that they can approve the rides and place the rides on their working calendar. The railroad has been very gracious with helping us conduct our rides (our main source of income) over the years. We can not thank them enough for their support.

Dewey, Oklahoma has expressed interest in a ride in the fall. There is also some possible interest in a Wichita-Yoder ride as well. The only guaranteed rides so far are the Balkans Days ride Labor Day weekend in Pittsburg, the Artist Alley ride the last weekend of September in Chanute, KS and the Watco Christmas Express for first graders in December. More on the possible rides for 2020 will be discussed at the February meeting.

New Members!!

We have had several new members join Heart of the Heartlands in the past six months. The Heart of the Heartlands welcomes each of the new members listed below to our membership and are happy to see you onboard. If you have any questions about our group, just contact Brian at the information on page 1. Welcome Aboard!

Larry & Jenice Gaither - Lamar, MO
 Kevin & Marilyn Love - Dadeville, MO
 Kelly R. Martin - Ponca City, OK
 Stephen B. Meek - Webb City, MO
 Frank Parise - Columbus, KS

Ken Peak - Sparks, NV
 Jimmy Pradmore - Broken Bow, OK
 Bruce Sealy - Harrah, OK
 Sugar Creek Model Railroad & Historical Society - Bella Vista, AR

Back in Time?

This section is about railroad lines that may have since been abandoned. Where did they go? A brief history of some forgotten places.

Where Did They Go?

Missouri Pacific Coffeyville, KS to Nevada, MO

The Missouri Pacific line through Carona was actually a part of the 104 mile line that ran from Nassau Jct, (just south of Nevada, MO) to Coffeyville, KS. Some of the towns serviced along the route included Bronaugh, Liberal and Minedemines in MO. From the Missouri-Kansas border the towns of Pittsburg, Carona, Sherwin, Chetopa, Edna and Coffeyville were all stops on the line. Known as the Pittsburg Subdivision, construction of the line took place in 1886-87. As was the case for most of the railroads being constructed in southeast Kansas during this time, coal was the driving force. Moving the coal from the rich coal fields in the area fed a great deal of the railroad freight traffic at the turn of the century.

Looking at some old timetables for the Pittsburg Subdivision, passenger service was a common item through the late 1800's through the mid 1900's. A timetable from 1900 listed westbound train 9 leaving Nevada, MO at 6:40 am with arrival in Coffeyville at 10:40 am. Eastbound train 10 left Coffeyville, KS at 4:25 pm and arrived in Nevada, MO at 8:50 pm. By the time of World War I, there were 4 passenger trains, 2 each way, daily and two daily freights. In 1923, a timetable shows 2 passenger trains and 2 mixed freight trains daily. Mixed freight trains also carried a passenger car for passengers in addition to the regular freight. By 1931, only motor service was operating. An Electric car provided passenger service. There were 4 trains daily, two each direction. In 1940, motor service was down to 2 trains daily, one each direction.

Freight service continued through the entire time the Missouri Pacific operated the route. According to information from the Missouri Pacific Historical Society's "The Eagle" (Fall 1991), there were 21 grade crossings with other railroads on its run from Nevada to Coffeyville. These included several with the Frisco, and others with the AT&SF, the MKT, the KCS, NEO, the J&P and the UE. With all the interchanges there was plenty of service opportunities.

As things dwindled in southeast Kansas, so did the line. By the time the Missouri Pacific merged with the Union Pacific in 1982, the condition of the rail line had deteriorated considerably. The last Missouri Pacific trains ran east on April 11, 1987 from Coffeyville and returned from Pittsburg on April 12, 1987. On April 13, 1987, train operations were handled by the newly created South East Kansas Railroad. This was the first Watco shoreline and was also he first UP spinoff. The SEK continued operations on the line until it was absorbed by the SKOL in 1999. Of the original MOP line, the section from Liberal to Pittsburg and from Cherokee to Sherwin, through Carona, is all that remains today.

- Brian Carlson

Some content based on information from:

Missouri Pacific Historical Society - Fall 1991 article in the "The Eagle".

Timetable information from information prepared by Reed Hartford for Don Keeney

Coffeyville, KS

Carona, KS

Pittsburg, KS

Nevada, MO

Pittsburg Depot

Chetopa Depot

Photos - Kansas State Historical Society

Book Review Section!!!

This section is for a set of book reviews that member John Chambers has put together. We have several books in our small library at the Webb Center, but we are having more and more people ask about what books talk about the history of the railroads in the 4-state area. John has taken the time to produce these short book reviews to aid in ones' quest for that missing railroad history. Enjoy!



Cornell Junction depot. This was east of Pittsburg on the MOP between Nevada, MO and Coffeyville, KS.

From the Past...

St. Louis Trolleys in Color

Young, Andrew D. *St. Louis Trolleys in Color*. Scotch Plains, NJ: Morning Sun Books, 2011.

This is a nice color picture book of streetcars in St. Louis from 1940 to 1966. The pictures are crisp, clear and show some interesting scenes in the St. Louis area. The accompanying text is very informative and helps to explain the streetcar system of St. Louis and its demise. A nice book to have if you are interested in St. Louis. It is out of print but copies can still be found starting around \$60.00.

Topeka Rails

Gibson, William O. *Topeka Rails*. David City, NE: South Platte Press, 2000.

This short book is mostly a photographic history of the railroads of Topeka based on the memories and stories of the author whose father was employed by the Santa Fe. It makes for a nice evening's read. It covers all of the railroads that served the capitol city; Santa Fe, Mo Pac, Rock Island and the city streetcar system. It is out of print but a check on the internet should bring up some used copies for sale.

Harvey Houses of Kansas

Latimer, Rosa Walston. *Harvey Houses of Kansas*. Charleston, SC: The History Press, 2015.

This is a very nice book which tells the story of Fred Harvey in Kansas, how he started his famous restaurants and hotels in conjunction with the Santa Fe and his other facilities within the state. It has a section telling about the Harvey girls and their place in popular culture and what it was like working as one. In the back is a section with some recipes for Harvey house dishes that can be made at home. It tells the history of each Harvey operation within the state, when they operated and what kind of facility it was. It is a must read for anyone interested in the Santa Fe, Fred Harvey or Kansas history. It is still available from several sources and the publisher also has an e-book version.

January 8, 2020 - Heart of the Heartlands - Minutes

The January 8, 2020 meeting of the Heart of the Heartlands was brought to order by President Larry Spahn at 7:00 p.m.

Minutes of previous meeting: Guy Ferguson moved to accept the minutes as mailed. Ivan Voorhees seconded the motion, the motion passed.

Treasurer's Report: After the presentation of the treasurer's report by treasurer Brian Carlson, Connie Payton moved, Jack Evans seconded a motion to accept the treasurer's report. The motion was passed by the membership in attendance.

Old Business:

North Addition: Dave Parker and Larry Spahn spent one whole day installing the service wiring and distribution panel in the north addition. They installed the service wire and conduit and dug the trench for the conduit and installed the ground rod and wiring. They then hooked up power from the new panel to several receptacles, a switch and a couple of lights for use in the building during construction. They have spent several days working on getting all of the wall boxes, light fixtures, fan support boxes and outside receptacles installed. In addition, they also pulled all of the wire and put it in the boxes. Better Built came out to install the walls for the new closets so they then finished up the wiring. Brian Carlson installed the wiring for the computer and video on January 4. President Larry Spahn contacted a painter and he said he will paint the walls and ceilings, primer and two coats for \$400.00. The Heartlands will supply the paint but he said that we can use his account to get his discount on the paint. John Chambers moved to have Seward's deliver sheet rock and insulation for the new addition and to have the painter paint the walls for \$400 and for the person Larry had contacted to install the sheet rock. Darrell Cave seconded the motion and the motion passed by the membership present. A motion was made by Mike Payton and seconded by Joe Murphey to name the new addition the "Ron Morgan Addition". The motion passed by the membership present.

Engine Display: Cameron Lundy has worked with the SKOL track department to have a display track panel constructed for the seventy ton, CVR engine which is now on site at Carona. The display track is now built and is near the display pad. It is too wet to place the track on the pad but this will be done when the ground dries out.

First Graders Train Ride: There were approximately 381 first graders on the Watco Christmas Express train ride on December 9th. Large sugar cookies and bottles of water were distributed to the students by employees from Watco. Santa was waiting along the line and waved at the kids from a bucket truck as the train passed by. Upon returning to Pittsburg, each student received a bell and a Christmas book as they got off of the train. Heartland members that assisted on the ride were Brenda and Guy Ferguson, Denzel and Ivan Voorhees, Jim McKeel, Nick Yberra, John Chambers, Dave Parker and Kathy and Larry Spahn.

KCS Holiday Express: Because of snow, icy road conditions and very cold blowing winds, attendance was down a bit at Pittsburg this year. This also kept the number of elf volunteers from the Heartlands at home. Darrell Cave and Brian Carlson were the only Heartlands' members that were able to help with the train this year. Just under 900 people went through the train in Pittsburg. Nick Yberra helped out with the train in Arkansas and the Joplin visit prior to its arrival in Pittsburg.

Motor Car Ride: There is a motor car ride scheduled to be held at Stillwater, Oklahoma on January 18th, 2020. See our website for more information if you are interested in more information. No work has been done or the delivery of any ties and rails has occurred at the display site yet. Cameron Lundy is working with the track department to accomplish the task. Wet weather is a big factor.

New Business:

Train Ride Safety Meeting: Discussion was held about when to have the 2020 Ride Safety Training. The training at Carona will be on March 14 at 1:00 pm.

Parts motor car: The parts car that was bought for the rebuilding project of the KCS motor car that is now on display with the KCS 1023 locomotive was purchased by Heartlands member, Stuart Remmers. Joe Murphy and friends completely rebuilt the car that was donated by Heartlands' member Steve Gardner.

Train Rides for 2020: This is the time that the Heartlands present their proposed schedule to the railroads for approval. Dewey, Oklahoma has already expressed interest in a ride in the fall of 2020. Larry Spahn has had a couple of calls from persons wanting to know if the club is planning a Wichita/Yoder rider this year. The 2020 rides already scheduled are the Little Balkans Days ride on the first weekend in September and the Chanute Artist Alley rides on the last Saturday in September and the Watco Christmas Express for first graders in December. Work will be done on a proposal to present at the February meeting.

NARCOA Membership and Insurance: January is normally the time when the Heartlands is asked to renew its NARCOA membership and to submit their annual insurance premium for motor car rides. With a ride already scheduled on January 18th, Tom Johnston moved and Connie Payton seconded to pay the 2020 NARCOA membership dues and insurance for the Heart of the Heartlands. The motion passed by the membership present. Secretary-Treasurer will pay the membership and insurance premium when it is received.

Heartland Dues: The 2020 dues are now payable for those that have not already paid in advance. The Heart of the Heartlands continues the quest to preserve our railroad history and heritage of the four states. Your continuing support is visible at our museum complex located in Carona, Kansas. We continue to expand our rolling stock displays and current expansion of the Webb Center. The future continues to look bright ahead with the growth of our railroad memorabilia collections and growing list of donations. We appreciate your support of the Heart of the Heartlands and look forward to having your support into the future.

Correspondence:

- Ron Morgan, an original and life long Heartland member passed away on the morning of January 02, 2020. He had been a resident of Medical Lodge of Frontenac since 2014. Ron was a true lover of everything pertaining to railroading and enjoyed working on the passenger train rides and displays at the Heartland museum in Carona. Grave side services for Ron were held at 10:00am on Tuesday, January 8th in Highland Park cemetery.
- Stuart Remmers is willing to take over planning rides for the Heartlands. He will setup rides in central Kansas. Drake Rice will also be planning rides for the Heartlands. He will work on rides in the Oklahoma and southeast Kansas areas.
- It was discussed that the South Kansas and Oklahoma is retiring some former Kansas City Southern GP-30's. Club members did not feel that the Heartlands could take one for the complex with all of the other ongoing projects. John Chambers said that he would help anyone interested in obtaining one by getting contact information to any interested party.
- John Chambers announced that there would be a slide show on February 16 at the Webb Center from 11:00 am to 5:00 pm.
- Brian Carlson mentioned that Jim McKeel and Brian successfully setup a PayPal account for the club to handle online payments of memberships as well as donations to the Heartlands.

Donations:

- Herb Shauver III donated 7-9 boxes of items to the Heartlands.
- New member Kevin Love, who is also president of the Missouri Pacific Historical Society, donated a box of MPHS past magazines for the Heartlands' library.
- Woody donated a gas can and lenses.

Jack Evans moved to adjourn the meeting. Guy Ferguson seconded the motion and it passed by the membership present.